

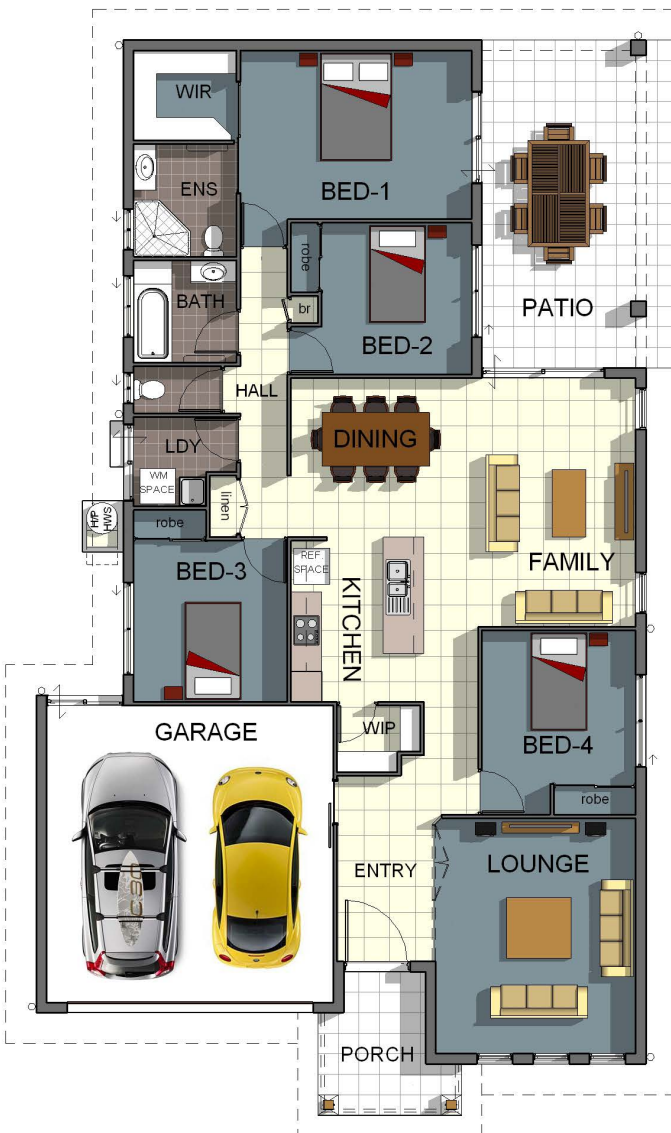
# Alpha 4C

4 2 2

Illustration only



People Who Research First Choose to Build with Grady Homes!



## Peace of Mind Guarantees:



Fixed Price Guarantee



5 Month Build Guarantee



12 Month Defect Warranty



Lifetime Structural Warranty

### total areas

Living	151.58m <sup>2</sup>
Garage	35.30m <sup>2</sup>
Alfresco	24.32m <sup>2</sup>
Porch	5.18m <sup>2</sup>



Phone 4795 0900  
[info@gradyhomes.com.au](mailto:info@gradyhomes.com.au)  
[www.gradyhomes.com.au](http://www.gradyhomes.com.au)

216m<sup>2</sup> total area

