

Beachwood 1A

4 2 2

Illustration only



People Who Research First Choose to Build with Grady Homes!

Peace of Mind Guarantees:



Fixed Price Guarantee



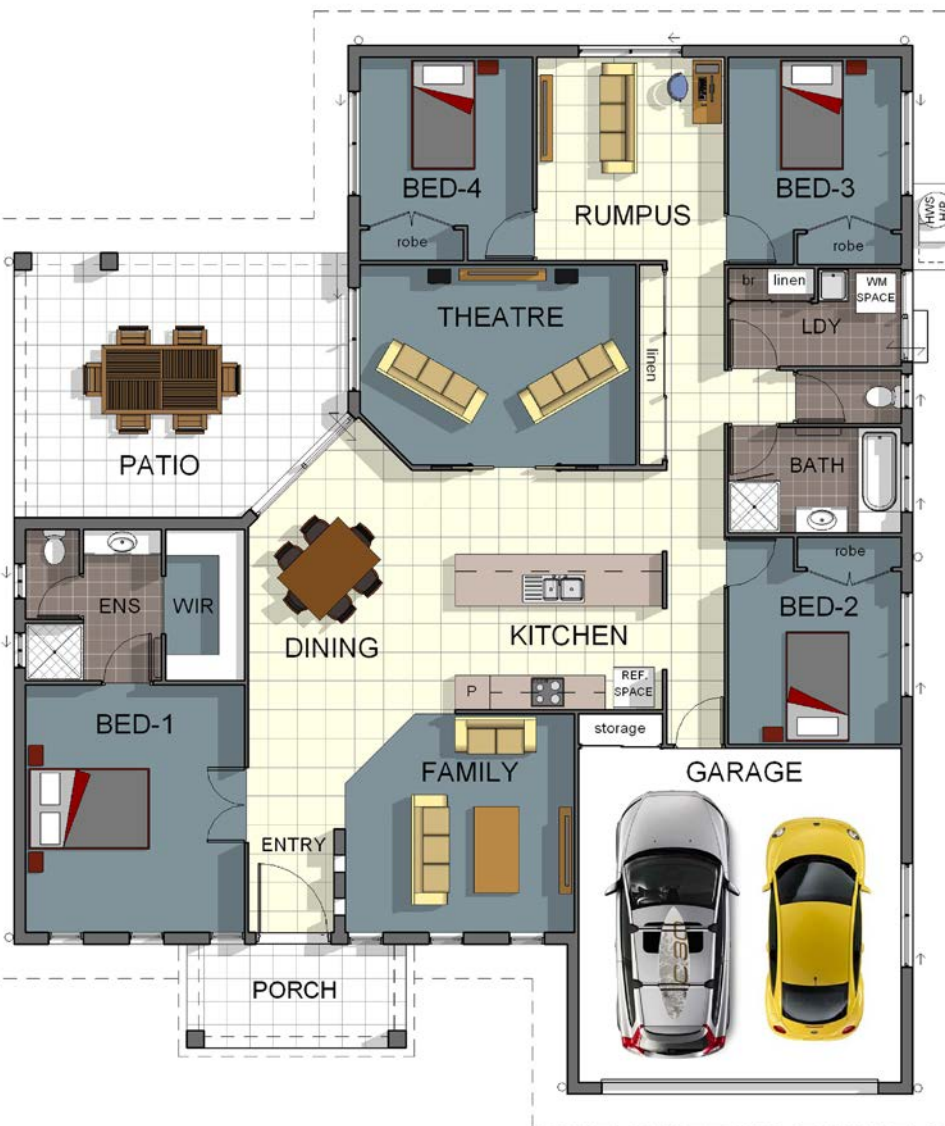
5 Month Build Guarantee



12 Month Defect Warranty



Lifetime Structural Warranty



total areas

Living 176.79m²

Garage 36.20m²

Alfresco 25.09m²

Porch 6.84m²



Phone 4795 0900
info@gradyhomes.com.au
www.gradyhomes.com.au

245m² total area

Beachwood 1A

4  2  2 

