

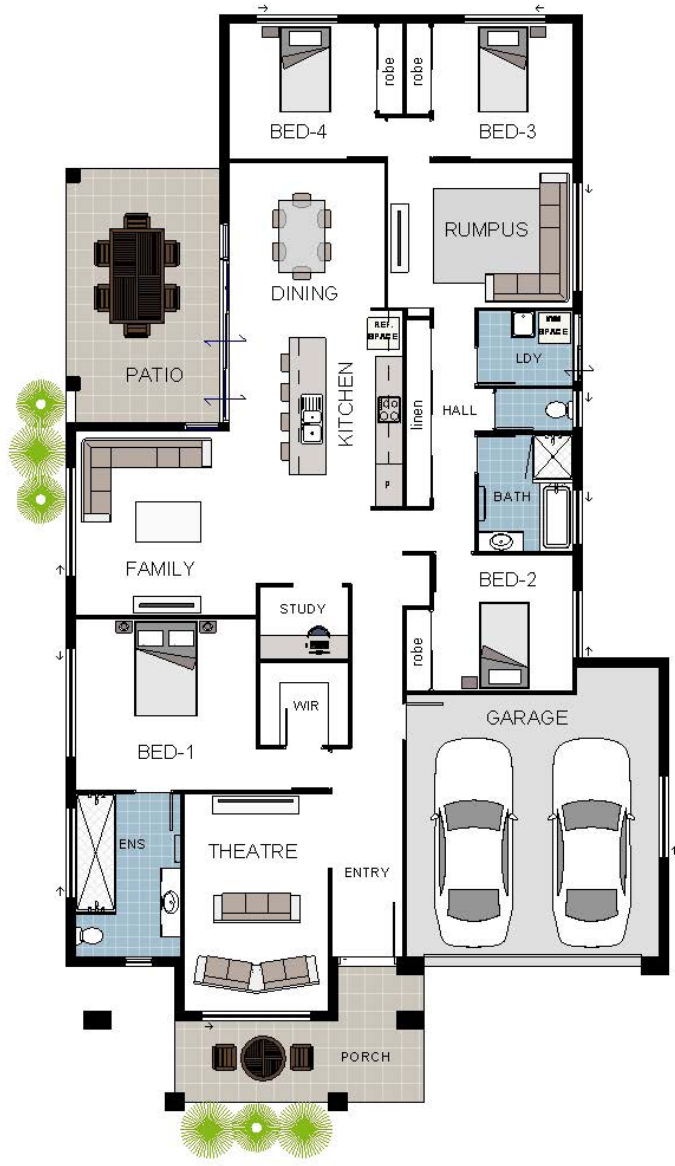
# Magnetic 14D

4  2  2  1 

Illustration only



People Who Research First Choose to Build with Grady Homes!



## Peace of Mind Guarantees:



Fixed Price Guarantee



5 Month Build Guarantee



12 Month Defect Warranty



Lifetime Structural Warranty

### total areas

Living	189.72m <sup>2</sup>
Garage	35.18m <sup>2</sup>
Alfresco	19.04m <sup>2</sup>
Porch	6.10m <sup>2</sup>



Phone 4795 0900  
[info@gradyhomes.com.au](mailto:info@gradyhomes.com.au)  
[www.gradyhomes.com.au](http://www.gradyhomes.com.au)

250m<sup>2</sup> total area

# Magnetic 14A

4  2  2  1 

