

# Magnetic 1A

4 2 2 1

Illustration only



People Who Research First Choose to Build with Grady Homes!

## Peace of Mind Guarantees:



Fixed Price Guarantee



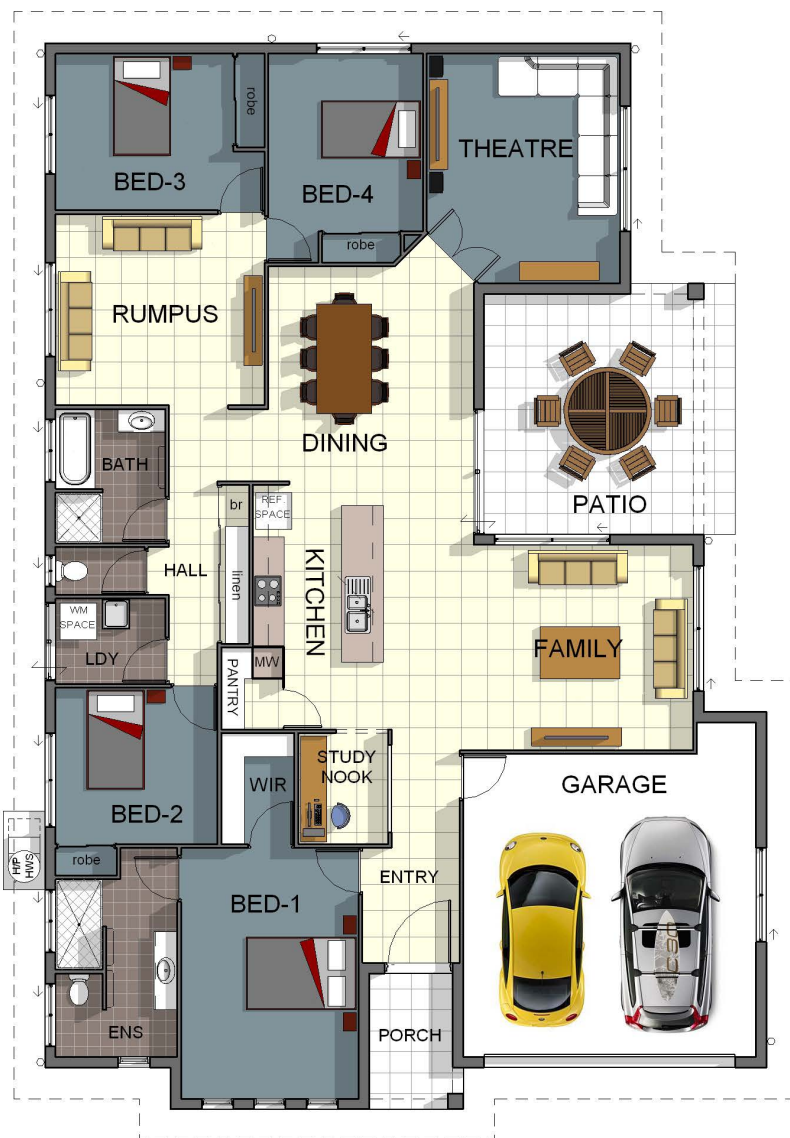
5 Month Build Guarantee



12 Month Defect Warranty



Lifetime Structural Warranty



## total areas

Living	193.04m <sup>2</sup>
Garage	36.20m <sup>2</sup>
Alfresco	19.60m <sup>2</sup>
Porch	4.32m <sup>2</sup>



Phone 4795 0900  
[info@gradyhomes.com.au](mailto:info@gradyhomes.com.au)  
[www.gradyhomes.com.au](http://www.gradyhomes.com.au)

253m<sup>2</sup> total area

# Magnetic 1A

4  2  2  1 

